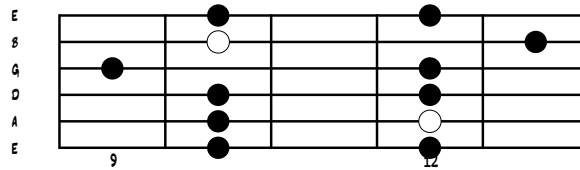


MINOR PENTATONIC PATTERN 3

AARON RASHAW



Two guitar staves showing fretboard patterns for Minor Pentatonic Pattern 3. The first staff starts at the 9th fret, and the second staff starts at the 4th fret. Both patterns are shown in two measures, with fret numbers indicating the notes.

TRY SOME "DOUBLE STOPS." PLAY ANY 2 SCALE TONES TOGETHER AND SEE HOW IT SOUNDS. YOU SHOULD DO THIS WITH ALL THE PATTERNS! THIS IS ANOTHER GREAT EFFECT.

Two guitar staves showing double stop exercises. The first staff (labeled 7) shows triplets of double stops between frets 10 and 12. The second staff (labeled 8) shows triplets of double stops between frets 9 and 12, and between frets 10 and 13. A lightning bolt symbol indicates a sharp bend at the end of the second staff.

THIS EXAMPLE IS STILL BASED OFF A MINOR PENTATONIC. DID YOU GET HERE OK FROM PATTERN 2? DO YOU KNOW HOW TO GET TO PATTERN 4? CAN YOU CONNECT PATTERNS 1,2,3 STARTING FROM THE 5TH FRET A NOTE? YOUR STARTING TO COVER SOME GROUND NOW!