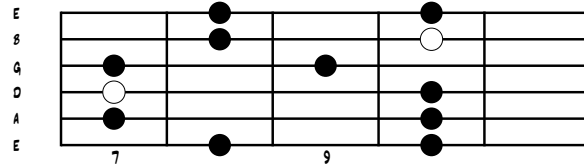


# MINOR PENTATONIC PATTERN 2

AARON RASHAW



Two guitar staves showing the minor pentatonic scale in the 7th and 9th frets. The first staff starts at fret 7 and ends at fret 10. The second staff starts at fret 4 and ends at fret 10. The notes are: 7th fret (A, D, G, S, A), 9th fret (B, E, A, D, B).

*ADD SOME TURNS (HAMMER ON AND PULL OFF COMBINATION, 3 NOTES 1 PICK) TO YOUR PENTATONIC SCALES!*

Staff 7: A guitar staff showing the minor pentatonic scale in the 7th fret with triplets and turns. The notes are: 7th fret (A, D, G, S, A). The triplets are: 7-10-7, 7-10-7, 7-9-7, 8-10-8, 8-10-8, 8-10-8, 7-9-7.

Staff 9: A guitar staff showing the minor pentatonic scale in the 9th fret with triplets and turns. The notes are: 9th fret (B, E, A, D, B). The triplets are: 7-10-7, 7-10-7, 8-10-8.

*HAMMER ONS, PULL OFFS, AND TURNS, SHOULD BE USED ON ALL PENTATONIC PATTERNS FOR SOME NICE EFFECTS!*

THIS EXAMPLE IS IN A MINOR PENTATONIC. HOW AND WHERE DOES THIS PATTERN CONNECT TO PATTERN 3?  
DO YOU KNOW WHAT FRET? IS YOUR EAR TELLING YOU AS WELL?